

ANNOTATED CHECKLIST OF TYPE SPECIMENS OF NEW ZEALAND PLANTS IN THE AUCKLAND INSTITUTE AND MUSEUM HERBARIUM

Part 4. Monocotyledones — except Gramineae

JEANNE H. GOULDING

AUCKLAND INSTITUTE AND MUSEUM

Abstract. In continuation of an annotated checklist of presumptive type material of New Zealand species in the AK Herbarium the following families of monocotyledons are included: Burmanniaceae, Centrolepidaceae, Cyperaceae, Juncaceae, Liliaceae, Orchidaceae, Potamogetonaceae and Zannichelliaceae.

This part includes all monocotyledonous types except Gramineae which was published as Part 3 (Wright 1978). Specimens thought to have type status are listed, together with their author and publication reference. Details of the type locality, quoted directly from the original description, are given in quotation marks. In citing AK specimens, labels and notes of the collectors have been quoted where possible, giving their information in the following order: locality, collector, date, AK number. Metric equivalents of altitudes, distances and measurements have been added in square brackets. An asterisk before the specimen data denotes that the label is written in a handwriting other than that of the collector (often in Cheeseman's hand on labels printed "Herb. T. F. Cheeseman"). † after specimen information indicates reference to published designation of the AK specimen as type material.

In this paper, the institution holding the major portion of the herbarium of the collector, if other than AK, is indicated in brackets at the end of the specimen data. Herbarium abbreviations are:- AK = Auckland Institute and Museum; BM = British Museum (Natural History); CHR = Botany Division, D.S.I.R., Christchurch; K = Royal Botanic Gardens, Kew; LD = Botanical Museum, Lund, Sweden; MEL = National Herbarium of Victoria, Royal Botanic Gardens, Melbourne; WELT = National Museum, Wellington.

BURMANNIACEAE

Bagnisia hillii Cheesem. *Kew Bull. for 1908*: 420 (1908)

TYPE LOCALITY. "Northern Island; in primeval woods at Opepe, near Lake Taupo, H. Hill; T. F. Cheeseman."

Specimen. *Opepe, Taupo, H. Hill, Jan. 1908, AK 116750 (in spirits) (†Moore and Edgar 1970: 101). (K and WELT).

CENTROLEPIDACEAE

Centrolepis minima Kirk *Trans. Proc. N.Z. Inst.* 23: 441 (1891)

TYPE LOCALITY. "Shores of Lake Brunner, T. Kirk."

Specimen. Lake Brunner, Kirk, no date, AK 2892 (†Moore and Edgar 1970: 83). (WELT).

Gaimardia ciliata Hook. f. *Fl. Antarct.* 1: 85 (1844)

TYPE LOCALITY. "Lord Auckland's group; exposed places on the hills, very abundant, forming large green patches."

Specimen. *Auckland Island, J. D. Hooker, November 1840, AK 2910 (†Moore and Edgar 1970: 84). (K).

CYPERACEAE

Carex allanii Hamlin *Trans. R. Soc. N.Z. Bot.* 1: 272 (1962)

TYPE LOCALITY. "North Otago Botanical District: Old Man Range, Clutha Valley, 1,200 m, Nov. 1893, Petrie."

Specimen. *Old Man Range, Otago, D. Petrie, no date, AK 2476 (†Hamlin 1962: 273). (WELT).

Carex australis Kirk *Trans. Proc. N.Z. Inst.* 26: 262 (1894)

TYPE LOCALITY. "Stewart Island, C. Traill and T. Kirk (1882)."

Specimen. *Stewart Island, T. Kirk, no date, AK 2751 (†Hamlin 1968: 106). (WELT).

Carex berggrenii Petrie *Trans. Proc. N.Z. Inst.* 18: 297 (1886)

TYPE LOCALITY. "Mount Pisa Range, at the head-waters of the Luggate Creek, 4,000 to 5,000 feet [1219-1524 m]."

Specimens. *Summit of Mt Pisa, Otago, 4,500ft [1371 m], D. Petrie, no date, AK 2693 (2 sheets) (†Hamlin 1968: 105). (WELT).

Carex carsei Petrie *Trans. Proc. N.Z. Inst.* 54: 570 (1923)

TYPE LOCALITY. "Swampy stations on the Waimarino Plain: H. Carse and H. B. Mathews! Near Lake Tennyson (Southern Nelson); W. G. Morrison!"

Specimens. In bogs in several parts of Waimarino Plain, H. Carse, Jan. 1921, AK 1283; Waimarino Plain, H. Carse, no date, AK 59072; *Waimarion Plain, H. Carse, no date, AK 59069. (CHR).

Carex cephalotes F. Muell. *Trans. Phil. Soc. Vict.* 1: 110 (1855)

TYPE LOCALITY. "On the grassy summits of the Munyang Mountains, moistened by the perpetual glaciers, or on the most elevated springs."

Specimen. Munyang Mountains, no collector, no date (on label printed "Phytologic Museum of Melbourne. Baron Ferd. von Mueller, Ph. and M.D.") AK 96550 (†Moore and Edgar 1970: 244). (MEL).

Note. In Moore and Edgar (1970: 244) the type locality is not exactly the same as that in Mueller (1855) which is quoted above. The original description was headed "*Carex cephalotes*" presumably a printer's error, as the AK label on Mueller's specimen has "cephalotes" in his handwriting.

Carex cheesemanii Petrie *Trans Proc. N.Z. Inst.* 15: 358 (1883)

TYPE LOCALITY. "Maniototo Plain 1,000-2,000 feet [304-609 m]; Nevis Valley 1,500 feet [457 m]."

Specimens. Naseby, Herb. D. Petrie, no date, AK 2731 (2 sheets) (†Hamlin 1968: 107). (WELT).

Carex cinnamomea Cheesem. *Trans. Proc. N.Z. Inst.* 14, 301 (1882)

TYPE LOCALITY. "Graham River and other tributaries of the Motueka rising in Mount Arthur. Sources of the Takaka River, ascending to 3,500 feet [1066 m] altitude."

Specimen. Takaka River, Nelson, 3,000ft [914 m], T.F.C., Jan. 1881, AK 2828 (†Moore and Edgar 1970: 246).

Carex cirrhosa Bergg. *Minneskr. fisiogr. Sällsk. Lund Art* 8, 29, t.7, f.27-34 (1878)

TYPE LOCALITY. "ad flumen Waimakariri in alpebus insulae australis Novae Zelandiae".

Specimen. *"Utricles from Berggren's own cirrhosa collected in the Alps near the Waimakariri River" written on small package ex C. B. Clarke attached to sheet of *C. cirrhosa* AK 2687. (L).

Carex cirrhosa Bergg. var. **lutescens** Kuk. ex Cheesem, *Man. N.Z. Fl.*: 825 (1906)

TYPE LOCALITY. "Canterbury — Upper Waimakariri and Lake Lyndon, Berggren! Enys! Kirk! Cockayne! T.F.C."

Specimen. Lake Lyndon, Canterbury Alps, T.F.C., Jan. 1880, AK 2688 (2 sheets) (†Hamlin 1968: 108).

Carex comans Bergg. var. **stricta** Cheesem. *Trans. Proc. N.Z. Inst.* 24: 415 (1892)

TYPE LOCALITY. "Lake Tekapo"

Specimens: Lake Tekapo, Canterbury, alt. 2,500ft [762 m], T.F.C., Jan. 1883, AK 2739 (52 to Kukenthal) (†Hamlin 1968: 107); also AK 2740, AK 2742 (2 sheets).

Carex cryptocarpa Cheesem. *Trans Proc. N.Z. Inst.* 16: 412 (1884)

TYPE LOCALITY. "Lake Tekapo, Canterbury; altitude 2,500 feet (762 m)."

Specimen. Lake Tekapo, Canterbury, alt. 2,500ft [762 m], T.F.C., Jany 1883, AK 2697 (†Hamlin 1968: 105).

Carex dallii Kirk *Trans. Proc. N.Z. Inst.* 26: 261 (1894)

TYPE LOCALITY. "Near the source of the Heaphy River, Nelson, J. Dall."

Specimen. *Heaphy River, South Island, no collector, no date, AK 2704 ex Herb. T. Kirk (†Hamlin 1968: 100). (WELT).

Carex devia Cheesem. *Trans. Proc. N.Z. Inst.* 15: 301 (1883)

TYPE LOCALITY. "Mountain districts in Nelson, not uncommon above 2,500 feet [762 m] altitude."

Specimens. Red Hills, Wairau Valley, Nelson 3,000ft [914 m], T.F.C., no date, AK 2662 (3 sheets) (†Hamlin 1968: 110).

Carex dissita Boott var. **ochrosaccus** C. B. Clarke ex Cheesem. *Man. N.Z. Fl.*: 831 (1906)

TYPE LOCALITY. "Whangarei, Carse! Kaipara, Kirk! vicinity of Auckland, T.F.C."

Specimens. St Heliers, Auckland, T.F.C., Nov. 1882, AK 2775, AK 2776 (56 to Kukenthal). (†Hamlin 1968: 99).

Carex elingamita Hamlin *Trans. R. Soc. N.Z.* 85: 393 (1958)

TYPE LOCALITY. "Three Kings Islands: Nov. 1889, Cheesemen"

Specimens. Three Kings Islands, T.F.C., Nov. 1889, AK 2839, AK 3840.

Carex fascicularis Sol. ex Boott var. **minor** Boott in Hook.f. *Fl. N.Z.* 1: 283 (1853)

TYPE LOCALITY. "Northern and Middle Islands; common in moist woods, etc. Banks and Solander, etc."

Specimen. *New Zealand 1769-70, Banks and Solander (Ex Herbario Musei Britannici) AK 109850. (BM).

Carex flagellifera Col. *Trans. Proc. N.Z. Inst.* 16: 342 (1884)

TYPE LOCALITY. "On sides of abrupt clayey declivities, woods, between Norsewood and Danneverke, Waipawa County, 1881-1883: W.C."

Specimen. *Norsewood, Hawkes Bay, W. Colenso, no date, AK 2672. (WELT).

Carex flaviformis Nelmes *Kew Bull.* 10: 84 (1955)

TYPE LOCALITY. "New Zealand, Cheeseman."

Specimens. Lake Tekapo, Canterbury, alt. 2,500ft [762 m], T.F.C., Jan. 1883, AK 2821-2; Mount Arthur Plateau, Nelson, 4,000ft [1219 m], T.F.C., Jan. 1886, AK 2815.

Note. No type indicated by Nelmes (1955) but AK 2815 listed as representative by Moore and Edgar (1970: 266).

Carex fretalis Hamlin *Rec. Dom. Mus. Wellington* 6: 107 (1968)

TYPE LOCALITY. "Bluff Hill, north side, wet ground among stones and alien grasses, 28 Feb. 1967, B. G. Hamlin 976."

Specimen. *Halfway up Bluff Hill, Southland, B. G. Hamlin, 28.2.1967, AK 116482. (WELT).

Carex gibbsii Petrie *Trans. Proc. N.Z. Inst.* 46:35 (1914)

TYPE LOCALITY. "Shallow open swampy flats at Cedar Creek, Waimangaroa River (near Denniston), west Nelson, about 1,760ft [536 m]."

Specimen. *Cedar Creek, near Denniston, D. Petrie, no date, AK 2705 (†Hamlin 1968: 101). (WELT).

Carex goyeni Petrie *Trans. Proc. N.Z. Inst.* 14: 363 (1882)

TYPE LOCALITY. "Head of Lake Wakatipu, 1,100ft [335 m]."

Specimen. First land at head of Lake Wakatipu. 1,100ft [335 m], D.P., no date, AK 2616 (†Hamlin 1968: 111). (WELT).

Carex hectori Petrie *Trans. Proc. N.Z. Inst.* 27: 405 (1895)

TYPE LOCALITY. "Old Man Range (4,800ft) [1463 m]."

Specimen. Old Man Range, Central Otago, 4,800ft [1463 m]. D.P., March 1894, AK 2695 (2 sheets). (†Hamlin 1968: 105). (WELT).

Carex inconspicua Col. *Trans. Proc. N.Z. Inst.* 28: 612 (1896)

TYPE LOCALITY. "Ruahine Mountain-range, east side: Mr A. Olsen; 1895"

Specimen. *Ruahine Range, A. Olsen, 1895, AK 2469 (†Hamlin 1962: 270). (WELT).

Carex inopinata Cook *Trans. R. Soc. N.Z.* 81: 162 (1953)

TYPE LOCALITY. "Castle Hill, Canterbury, 1946, Talbot; 1947, Cook. Type in Auckland Museum. No. 24076."

Specimen. Castle Hill, Canterbury, ca 2,800ft [853 m], V. J. Cook 1006, Jan. 1947, (Type species), AK 24074 (†Moore and Edgar 1970: 267).

Note. The type number AK 24074 does not tally with that given by Cook 1953 and no specimen numbered AK 24076 has been found.

Carex inversa R. Br. var. **radicata** Cheesem. *Trans. Proc. N.Z. Inst.* 16: 425 (1884)

TYPE LOCALITY. "Lakes Tekapo and Pukaki, Canterbury, altitude 2,500ft [762 m]."

Specimens: Lake Tekapo, Canterbury, alt. 2,500ft [762 m], T.F.C., Janr. 1883, AK 2542 (†Moore and Edgar 1970: 282). Also AK 2543.

Carex kermadecensis Petrie *Trans. Proc. N.Z. Inst.* 47: 56 (1915)

TYPE LOCALITY. "Denham Bay, Sunday Island, Kermadecs."

Specimen. Denham Bay, Sunday Island, W.R.B.O., 7 Nov. 1908, AK 2837. (WELT).

Carex kirkii Petrie *Trans. Proc. N.Z. Inst.* 18: 297 (1886)

TYPE LOCALITY. "Mount Pisa Range, at the head-waters of the Luggate Creek, 4,000 to 5,000ft [1219-1524 m]."

Specimen. Headwaters of Luggate Creek, Mt Pisa, 4,000ft [1219 m] (From the Herbarium of D. Petrie). Feby 1885, AK 2480 (†Moore and Edgar 1970: 279). (WELT).

Carex kirkii Petrie var. **elatior** Kuk. ex Cheesem. *Man. N.Z. Fl.*: 811 (1906)

TYPE LOCALITY. "Mount Arthur Plateau, T.F.C.; Mount St. Bathans (Otago), Petrie!"

Specimens. Mount Arthur Plateau, Nelson, alt. 4,000ft [1219 m], T.F.C., Jan 1886, (n.14 Kukenthal), AK 2485 (†Moore and Edgar 1970: 280). Also AK 2486.

Carex kirkii Petrie var. **membranacea** Kuk. ex Cheesem. *Man. N.Z. Fl.*: 811 (1906)

TYPE LOCALITY. "Mount Arthur Plateau, T.F.C."

Specimens. Mount Arthur Plateau, Nelson, alt. 4,000ft [1219 m], T.F.C., Jan. 1886, AK 2490 (n.15 Kukenthal), AK 2489.

Carex petriei Cheesem. *Trans. Proc. N.Z. Inst.* 16: 413 (1884)

TYPE LOCALITY. "Mountains of Canterbury, apparently not uncommon between 2,500 and 4,500 feet [762-1371 m]: T.F.C. Dunstan Mountains, Lake Wanaka, and near Naseby, Otago: D. Petrie."

Specimen. Mountains above the Broken River, Canterbury, alt. 4,000ft [1219 m], T.F.C., Jan. 1883, AK 2707 (47 Kukenthal) (†Hamlin 1968: 101).

Carex picta Col. *Trans. Proc. N.Z. Inst.* 21: 103 (1889)

TYPE LOCALITY. "Open grassy plains at Tahoraiti, south of Dannevirke, County of Waipawa; 1887: W.C."

Specimen. *Near Dannevirke, Hawkes Bay, W. Colenso, no date, AK 2548 (†Moore and Edgar 1970: 283). (K and WELT).

Carex pleisotachys C. B. Clarke ex Cheesem. *Man. N.Z. Fl.*: 829 (1906)

TYPE LOCALITY. "Otago-Milford Sound, Kirk!"

Specimen: Milford Sound (From the Herbarium of T. Kirk, Wellington, New Zealand printed on label), no collector, no date, AK 2734 (†Hamlin 1968: 105). (WELT).

Carex pumila Thunb. var. **macrocarpa** Carse *Trans. Proc. N.Z. Inst.* 48: 241 (1916)
TYPE LOCALITY. "In damp hollows, among sand-dunes, Tauroa (Reef Point)."

Specimen. In damp hollow among sandunes Tauroa, H.B.M., H.C., Jan. 1915 (ex Herb. H. Carse, Kaiaka, Auckland, N.Z.), AK 2809.

Carex semiforsteri C. B. Clarke ex Cheesem. *Man. N.Z. Fl.*: 836 (1906)

TYPE LOCALITY. "Kermadec Islands: T.F.C., Miss Shakespear! North and South Islands; Not uncommon throughout. Sea-level to 2,000ft [609 m]."

Specimen. *Herb. Colenso, no. 1622, AK2838 (†Moore and Edgar 1970: 244). Also Herb. Colenso 4189, AK 2833, and AK 2834. (K and WELT).

Carex smaragdina Col. *Trans. Proc. N.Z. Inst.* 27: 398 (1895)

TYPE LOCALITY. "Interior damp forests at Dannevirke, County of Waipawa; March, 1894; W.C."

Specimen. *Dannevirke, H. B., W. Colenso, no date, AK 2535 (†Moore and Edgar 1970: 282). (K and WELT).

Carex ternaria Boott var. **gracilis** Cheesem. *Trans. Proc. N.Z. Inst.* 16: 431 (1884)

TYPE LOCALITY. ". . . from the North Cape to Stewart Island and the Auckland Isles, and from sea level to 4,000ft [1219 m]."

Specimen. Lake Waihi, Waikato, T.F.C., no date, AK 2590 (†Hamlin 1954: 59).

Carex ternaria Boott var. **minor** Boott forma **nigrescens** Kuk. *Pflanzenr.* 38: 369 (1909)

TYPE LOCALITY. "Arthur's Pass 900 m (Cockayne 1535)."

Specimen. *Arthurs Pass, in running water, L. Cockayne, no date, AK 2595. (WELT).

Carex ternaria Boott var. **pallida** Cheesem. *Trans. Proc. N.Z. Inst.* 16: 431 (1884)

TYPE LOCALITY. "Marshy places in the mountains of the South Island, apparently plentiful, D. Petrie! T.F.C."

Specimen. Lake Tekapo, Canterbury Alps, 2500ft [762 m], T.F.C., Jan. 1883, AK 2596. (†Hamlin 1954: 64).

Carex trachycarpa Cheesem. *Trans. Proc. N.Z. Inst.* 24: 413 (1892)

TYPE LOCALITY. "Nelson Province: Mount Owen, alt. 4,000ft [1219 m] Mount Arthur and Mount Peel, alt. 3,500ft to 4,500ft [1066 to 1371 m]."

Specimen. Mount Arthur, Nelson, alt 4500ft [1371 m], T.F.C., no date, AK 2491 (†Moore and Edgar 1970: 281).

Carex traversii Kirk *Trans. Proc. N.Z. Inst.* 26: 262 (1894)

TYPE LOCALITY. "Dun Mountain, & c; 3,000ft-4,000ft [914 m to 1219 m]. W. T. L. Travers."

Specimen. *Dun Mountain, Nelson, H. H. Travers, no date, AK 2706 (†Hamlin 1968: 101). (WELT).

Carex uncifolia Cheesem. *Trans. Proc. N.Z. Inst.* 16: 412 (1884)

TYPE LOCALITY. "Mountains flanking the Wairau Valley, Nelson; alt. 3,000-4,000ft [914-1219 m]."

Specimen. Red Hills, Wairau Valley, Nelson, alt. 3,000ft [914 m], T.F.C., Jan. 1882, AK 2700 (†Hamlin 1968: 104).

Carex uncifolia Cheesem. var. **libera** Kük. *Pflanzenr.* 38: 685 (1909)

TYPE LOCALITY. "Nelson: Mt Arthur Plateau, 4,000ft [1219 m] (Cheeseman!)."

Specimen. Mount Arthur Plateau, Nelson, 4,000ft [1219 m], T.F.C., 1886, AK 2703 (46 Kukenthal. "C.uncifolia") (†Hamlin 1968: 103).**Carex virgata** Sol. ex Boott in Hook.f. *Fl.N.Z.* 1: 282 (1853)

TYPE LOCALITY. "Throughout the Islands; common in woods, Banks and Solander, etc."

Specimen. *New Zealand 1769-70, Banks and Solander (Ex Herbario Musei Britannici), AK 109675. (BM).**Carex viridis** Petrie *Trans. Proc. N.Z. Inst.* 13: 332 (1881)

TYPE LOCALITY. "Rough Ridge, 3,000ft [914 m]; Nevis Stream, Otago, 2,000ft [609 m]."

Specimen. Rough Ridge, Otago, 3,000ft [914 m], no collector or date, but label, numbered 26, is in Petrie's hand, AK 2499. (WELT).**Carex wakatipu** Petrie *Trans. Proc. N.Z. Inst.* 14: 363 (1882)

TYPE LOCALITY. "Ben Lomond, near Queenstown, 3,000-5,000ft [914-1524 m]."

Specimen. Ben Lomond near Queenstown 3,000-5,000ft [914-1524 m], D.P. 42, no date, AK 2659. (WELT).**Carex wallii** Petrie *Trans. Proc. N.Z. Inst.* 53: 371 (1921)

TYPE LOCALITY. "Wet ground at Centre Hill, Southland: Arnold Wall! Collected February, 1920."

Specimen. *In wet ground, Centre Hill, Southland, Arnold Wall, Feby 1920 (Ex Herb. D. Petrie), AK 2477 (†Moore and Edgar 1970: 266). (CHR).**Chaetospora tendo** Banks et Sol. ex Hook. f. *Fl. N.Z.* 1: 273 (1853)

TYPE LOCALITY. "Northern Island. Opuragi, in wet, shrubby places, Banks and Solander. On clay hills, common, Sinclair, etc."

Specimens. New Zealand, Banks and Solander, 1769-70 (Ex Herbario Musei Britannici), AK 109501-2. (BM).**Eleocharis neozelandica** C. B. Clarke ex Kirk *Trans. Proc. N.Z. Inst.* 26: 260 (1894)

TYPE LOCALITY. "Cape Farewell, Nelson (1884) T.K."

Specimen. Cape Farewell, Nelson, from the Herbarium of T. Kirk, no date, AK 2048 (†Moore and Edgar 1970: 190). (WELT).**Schoenus carsei** Cheesem. *Man. N.Z. Fl.* 781 (1906)

TYPE LOCALITY. "Auckland — Swamps at Whangarei and between the Manukau Harbour and the Waikato River, H. Carse! Papatoetoe, Kirk! Taranaki — Ngairie Swamp, T.F.C."

Specimens. Big Swamp, Maungatapere, H.C., 25 Jan'y '99, AK 2180-81 (†Moore and Edgar 1970: 194). (CHR).**Schoenus moorei** Kirk *Trans. Proc. N.Z. Inst.* 13: 384 (1881)

TYPE LOCALITY. "North Island — at remarkable saline springs, Glenburn, East Coast."

Specimen. Glenburn, East Coast, T. Kirk, no date, AK 2205 (†Moore and Edgar 1970: 195). (WELT).

Schoenus vacillans Kirk. *Trans. Proc. N.Z. Inst.* 10: 421 (1878)

TYPE LOCALITY. "North Island. — Deep gullies at the source of the Matai River, Mount Wynyard."

Specimen. *Ravines near the base of Mount Wynyard, Thames. T. Kirk, no date, AK 2199 (†Moore and Edgar 1970: 196). (WELT).

Scirpus antipodus Cook *Trans. R. Soc. N.Z.* 81: 159 (1953)

TYPE LOCALITY. "Lake Waahi, near Huntly."

Specimen. Lake Waahi (Western edge), V.J.C. 1764, Sept 1942, AK 59164 (†Cook 1953: 160).

Scirpus caldwelii Cook *Trans R. Soc. N.Z.* 76: 568 (1947)

TYPE LOCALITY. "Waitakaruru, Thames Estuary."

Specimen. Waitakaruru nr Thames, V. J. Cook 542, Jan 1944, AK 59206 (†Cook 1947: 569).

Scirpus caligenis Cook *Trans. R. Soc. N.Z.* 81: 158 (1953)

TYPE LOCALITY. "Jackson, Teremakau River, Westland."

Specimens. Jackson's Teremakau River 2,000ft [609 m], D. Petrie, Jany. 1893, AK 2079 (2 sheets) (†Cook 1953: 159). (WELT).

Scirpus inundatus (R.Br.) Spreng. var **major** Cheesem. *Man. N.Z. Fl.* 776 (1906)

TYPE LOCALITY. "Abundant throughout."

Specimen. Kaitaia, T.F.C., Jan 1896, AK 2123.

Note. This is the earliest Cheeseman collection of this species in AK. No precise locality was given in the original description.

Scirpus medianus Cook *Trans. R. Soc. N.Z.* 76: 569 (1947)

TYPE LOCALITY. "vicinity of Thames."

Specimen. Waitakaruru nr Thames, V. J. Cook 463, Mch 1940, AK 61798, (Fig. 1) (†Cook 1947: 570).

Scirpus muscosus Kirk *Trans. Proc. N.Z. Inst.* 17: 224 (1885)

TYPE LOCALITY. "A minute species, less than one inch in height forming moss-like patches at the head of Paterson's Inlet. Also on the Bluff Hill."

Specimen. Stewart Island, T.K., no date, AK 2093. (WELT).

Scirpus perviridis Cook *Trans. R. Soc. N.Z.* 76: 570 (1947)

TYPE LOCALITY. "Vicinity Port Waikato."

Specimen. Port Waikato, V.J.C., no date, AK 59189 (†Cook 1947: 571).

Scirpus pottsii Cook *Trans. R. Soc. N.Z.* 81: 157 (1953)

TYPE LOCALITY. "Waimarino Plateau."

Specimen. Waimarino Plateau near Matatoke Viaduct, V.J. Cook 2469A, AK 24077 (†Cook 1953: 157).

Uncinia aucklandica Hamlin *Bull. Dom. Mus. Wellington* 19: 63 (1959)

TYPE LOCALITY. "Carnley Harbour, Auckland Islands, Aston."

Specimen. Carnley Harbour, Auckland Is, B. C. Aston, Jan. 1909, AK 2431 (2 sheets) (†Moore and Edgar 1970: 232). (WELT).

HERBARIUM OF V. J. COOKE.

FLORA OF NEW ZEALAND.

Collected by V. J. Cook No. 463
Scirpus medianus Cook
mt. Jan 1940
 Locality Mt. Takarua nr Thames
Type

Fig. 1. Herbarium label of V. J. Cook (10 x 7.5 cm).

Uncinia australis Pers. var. **clavata** Kuk. ex Cheesem. *Man. N.Z. Fl.* 802 (1906)

TYPE LOCALITY. "Near Wellington, Kirk! Otira Gorge, Kirk! T.F.C.; Mount Cook district, T.F.C."

Specimen. *Crow's Nest near Wellington, T. Kirk, no date, AK 2384 (85 Kukenthal) (†Hamlin 1959: 68). (WELT).

Uncinia caespitosa Boott ex Hook. *f. Fl. N.Z.* 1: 287 (1853)

TYPE LOCALITY. "Northern Island; woods, Ruahine mountains."

Specimen. *No locality, no date, Colenso 1644, AK 2359. (†Moore and Edgar 1970: 228). (K and WELT).

Uncinia cheesemanniana Boeck. *Engl. Bot. Jb.* 5: 521 (1884)

TYPE LOCALITY. "Mt Nelson alt. 4,000 ped. [1219 m] — T. F. Cheeseman leg."

Specimen. Mount Arthur, Nelson, 3,500ft [1066 m], T.F.C., Jan. 1881, AK 2330 (99 Kukenthal) (†Hamlin 1959: 59).

Uncinia compacta R. Br. var. **petriei** C. B. Clarke ex Cheesem. *Man. N.Z. Fl.* 800 (1906)

TYPE LOCALITY. "... South Island. Abundant in mountain districts throughout."

Specimen. Eweburn Creek, Naseby, 2,000ft [609 m], D. Petrie, Jan. 1887, AK 2339. (WELT).

Uncinia filiformis Boott ex Hook. *f. Fl. N.Z.* 1: 286 (1853)

TYPE LOCALITY. "Northern Island; top of the Ruahine mountains, Colenso. Middle Island, Lyall."

Specimen. *Ruahine Mountains, Colenso 1641, no date, AK 2451. (K and WELT).

Uncinia laxiflora Petrie *Trans. Proc. N.Z. Inst.* 17: 271 (1885)

TYPE LOCALITY. "Owake Flat near Catlin's River (P. Goyen); Stewart Island; Buller Valley (T. F. Cheeseman)."

Specimen. Buller Valley, Nelson, T.F.C., Jan. 1881, AK 2408.

Uncinia purpurata Petrie *Trans. Proc. N.Z. Inst.* 17: 272 (1885)

TYPE LOCALITY. "Signal Hill, Dunedin."

Specimen. *Near Dunedin, D. Petrie, no date, AK 2353 (114 Kukenthal). (WELT).

Uncinia sinclairii Boott var. **elegans** Kuk. ex Cheeseman. *Man. N.Z. Fl.* 799 (1906)

TYPE LOCALITY. "Black's, Otago, Petrie! 1,200-4,000ft [365-1219 m]."

Specimen. Blacks, Otago, D. Petrie, no date, AK 2325. (†Moore and Edgar 1970: 219). (WELT).

Uncinia strictissima Petrie *Trans. Proc. N.Z. Inst.* 47: 55 (1915)

TYPE LOCALITY. "Blueskin, Waitahuna, Lawrence, Roxburgh."

Specimen. *Waitahuna, Otago, D. Petrie, no date, AK 2442 (†Moore and Edgar 1970: 225). (WELT)

Uncinia tenella R. Br. var. **longifructus** Kuk. *Pflanzenr.* 38: 66 (1909)

TYPE LOCALITY. "Sudinsel, Otago (Kirk! Petrie!)."

Specimen. *Routeburn, Otago, T. Kirk, no date, AK 2328 (103 Kukenthal). (WELT).

IRIDACEAE

Libertia grandiflora (R. Br.), Sweet Hort. Brit. ed 2: 498 (1830)

TYPE LOCALITY. Tolaga Bay?

Specimens. *Banks and Solander, 1769-70, AK 103854-5 (BM).

JUNCACEAE

Juncus macrostigma Col. *Trans. Proc. N.Z. Inst.* 17: 253 (1885)

TYPE LOCALITY. "Sides of water-courses, Seventy-mile Bush, between Norsewood and Matamau, County of Waipawa; 1882: W.C."

Specimen. *Norsewood, Hawkes Bay, W. Colenso, no date, AK 2919 (†Moore and Edgar 1970: 61). (K and WELT).

Juncus pallidus R. Br. var. **triandrus** Cheesem. *Man. N.Z. Fl.* 725 (1906)

TYPE LOCALITY. "Vicinity of Auckland, T.F.C.; Paterson's Inlet, Stewart Island, D. Petrie!"

Specimens. St John's College, near Auckland, T.F.C., Dec. 1883, AK 2925, AK 2921, AK 2923 (†Edgar 1964: 182).

Luzula banksiana E. Mey. var. **orina** Edgar *N.Z.J. Bot.* 4: 171 (1966)

TYPE LOCALITY. "Near Lake Forsyth . . ."

Specimen. Near Lake Forsyth, rocky bank beside road to Little River. In stony ground in shade. E. Edgar, 20.10.1964. AK 110493 ex Botany Division D.S.I.R., Christchurch. dup. 149563. (CHR).

Luzula campestris (L.) DC var. **migrata** Buch. *Öst. bot. Z.* 48: 220 (1898)

TYPE LOCALITY. "Neuholland, Tasmania, Neuseeland."

Specimen. Mt Egmont Ranges, T.F.C., Jan. 1885, AK 109271 (†Edgar 1966: 170).

Luzula celata Edgar *N.Z. J. Bot.* 4: 165 (1966)

TYPE LOCALITY. "Potts River near bridge . . ."

Specimen. Potts River Bridge, Rangitata Valley. In dried out centre of *Raoulia* mat, on shingly ground above river bed, E. Edgar, 29.10.1964, AK 110488 ex Botany Division, Christchurch, dup. 149586. (CHR).

Luzula cheesemanii Buch. *Bot. Jb.* 12: 146 (1890)

TYPE LOCALITY. "Gordon's Nob, Nelson und Black Range, Canterbury Alps."

Specimen. Summit of Gordon's Nob, Nelson, alt. 4,000ft [1219 m], T.F.C., Jan. 1882, AK 3066, (Fig. 2) (†Edgar 1966: 179).

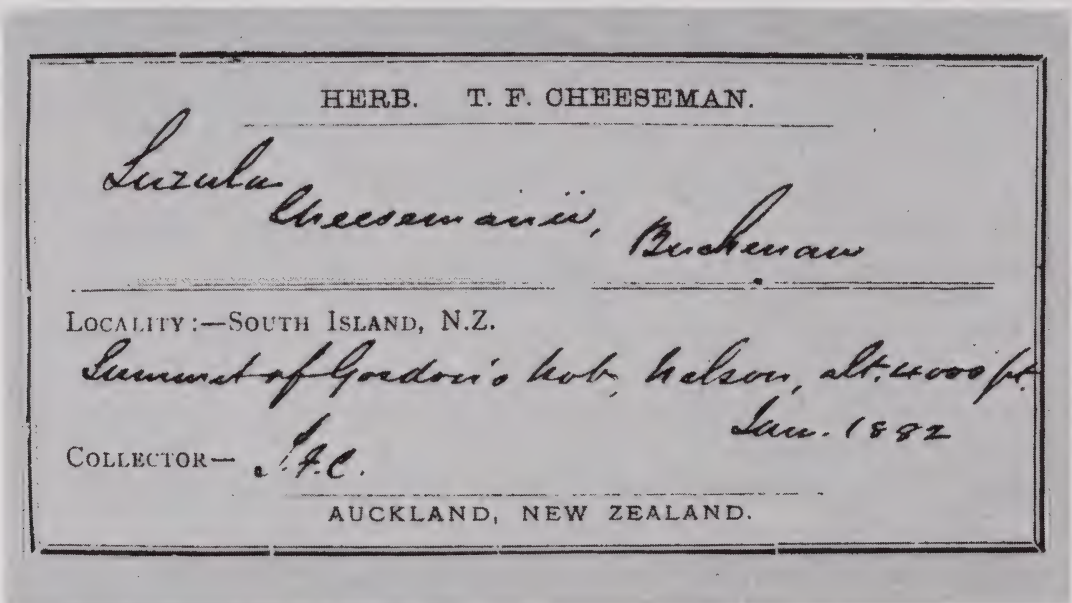


Fig. 2. Herbarium label of T. F. Cheeseman (13.5 x 7.5 cm).

Luzula leptophylla Buch. & Petrie *Öst. bot. Z.* 48: 214 (1898)

TYPE LOCALITY. "Mount Kyeburn, Eastern Otago, 3,500ft [1066 m], leg. Don. Petrie."

Specimen. Mt Kyeburn, 3,000ft [914 m], D.P. ex Herb. D. Petrie, AK 3068 (†Edgar 1966: 178). (WELT).

Luzula micrantha Buch. *Öst. bot. Z.* 48: 166 (1898)

TYPE LOCALITY. "Mt. Cardona near Lake Wanaka, 5,000ft [1524 m], Otago, Neu-Seeland; leg. Don. Petrie."

Specimen. *Mt Cardona, Otago, 6,000ft [1828 m], Petrie, no date, AK 105078 (†Edgar 1966: 180). (WELT).

Luzula rhadina Buch. *Öst. bot. Z.* 48: 212 (1898)

TYPE LOCALITY. "Kurow, Waitaki-River (300ft) [91 m] October 1892 leg. Don. Petrie

Specimen. Kurow, Waitaki River, D. Petrie, Oct. 1892, AK 3120 (†Edgar 1966 171). (WELT).

Luzula rufa Edgar var. **albicomans** Edgar *N.Z.J. Bot.* 4: 168 (1966)

TYPE LOCALITY. "Junction of Mingha and Bealey Rivers, Canterbury . . ."

Specimen. Junction of Mingha and Bealey Rivers, Canterbury. Sand on terrace, 2,200ft [670 m], W. Burke, 23.12. 1964, AK 110489 ex Botany Division, D.S.I.R., Christchurch 143378. (CHR).

Luzula wettsteinii Bush. *Öst. bot Z.* 48: 213 (1898)

TYPE LOCALITY. "Oberes Clintonthal bis zum See Te Anau, Otago, Sudinsel von Neuseeland, 1,500-2,000 Fuss [457-609 m]; Januar 1892 gesammelt von Donald Petrie."

Specimen. Clinton Valley, Te Anau, *Petrie, Jany 1892, AK 3097 (†Edgar 1966: 183). (WELT).

LILIACEAE

Arthropodium reflexum Col. *Trans. Proc. N.Z. Inst.* 18: 275 (1886)

TYPE LOCALITY. "Shaded sides of mountain streams. Seventy-mile Bush, County of Waipawa; 1870-83: W.C."

Specimen. *Waipawa, Hawke's Bay, W. Colenso, no date, AK 3252. (K and WELT).

Astelia banksii A. Cunn. *Compan. Bot. Mag.* 2: 374 (1837)

TYPE LOCALITY. "New Zealand (Northern Island) -1769, Sir Joseph Banks."

Specimen. *New Zealand 1769-70, Banks and Solander Ex Herbario Musei Britannici, AK 108251. (BM)

Astelia hastata Col. *Trans. Proc. N.Z. Inst.* 19: 265 (1887)

TYPE LOCALITY. "Forests, hilly country north of Napier, County of Wairoa; January, 1886: Mr A. Hamilton."

Specimen. *Wairoa, Hawkes Bay, A. Hamilton, January 1886, AK 3191. (WELT).

Astelia nana Carse *Trans. Proc. N.Z. Inst.* 57: 91 (1927)

TYPE LOCALITY. "North Island: On trunks of trees, Kaiaka (Mangonui Co.); Maungatapere (Whangarei Co.), H. Carse."

Specimens: Maungatapere, H. Carse, Aug. 1898; Growing on upper branch of dead Puriri, Kaiaka, H. C., 11 Sep. 1913, AK 3228 (2 on 1 sheet). Mauku, H. Carse, June 1901, AK 3227 (2 sheets). (CHR).

Astelia nivicola Ckn. ex Cheesm. *Man. N.Z. Fl.* 319 (1925)

TYPE LOCALITY. "Mount Cook district, altitude 4,500ft [1371 m] and upwards, Cockayne!"

Specimen. Hollows where snow lies along on Mt Ollivier, Sealey Range 4,000ft [1219 m] and upwards, L.C., 12 Feb 1919, AK 3224 (†Moore and Edgar 1970: 37). (WELT).

Bulbinella gibbsii Ckn. *Rep. Bot. Surv. St. Id.* 42 (1909)

TYPE LOCALITY. "Stewart Island: Bogs and subalpine meadows; abundant."

Specimens. Mt Anglem, Stewart Island, L.C. 9013, Jan. 1907 AK 3239. (Fig. 3) (†Moore and Edgar 1970: 23). Also L.C. 9008, AK 108733. (WELT).

Dianella nigra Col. *Trans. Proc. N.Z. Inst.* 16: 339 (1884)

TYPE LOCALITY. "Dry hillsides among undershrubs, forests near Matamau (S.), Waipawa County, 1882: W.C."

Specimen. *Norsewood, Hawkes Bay, W. Colenso, no date, AK 3229. (K and WELT).

No. 9013. Ex Herb. L. Cockayne

Chrysobactron gibbsii Cockayne

[Name altered as above in N.Z. Plants
and their Story, p. 220]

(Type Specimen)

Mt. Ariflem
Stewart Island

Coll: L.C. Jan. 1907.

Fig. 3. Herbarium label of L. Cockayne (17.5 x 9 cm).

ORCHIDACEAE

Caladenia carnea R. Br. var. **bartlettii** Hatch *Trans. R. Soc. N.Z.* 77: 402 (1949)

TYPE LOCALITY. "Wade River, Silverdale, 8.10.1947, F.W. Bartlett."

Specimen. *Wade River, Silverdale, F.W. Bartlett, ex Herb. Hatch 567, AK 24847
(†Moore and Edgar 1970: 110)

Caladenia carnea R. Br. var. **minor** forma **callinger** Hatch *Trans. R. Soc. N.Z. Bot.* 2:
187 (1963).

TYPE LOCALITY. "Bankside, Silverdale, 12.10.1949, F.W. Bartlett."

Specimen. **Bankside, Silverdale, F.W. Bartlett, 12.10.1949, AK 116832 (No. 1 on
sheet) (†Hatch 1963: 187)

Caladenia minor Hook. f. var. **exigua** Cheesem. *Man. N.Z. Fl.* 688 (1906)

TYPE LOCALITY. "Kaitaia (Mongonui County) R.H. Matthews!"

Specimen. *Kaitaia, Mangonui County, R.H. Matthews, no date, AK 3589 (†Moore and
Edgar 1970: 110)

Caladenia variegata Col. *Trans. Proc. N.Z. Inst.* 17: 248 (1885)

TYPE LOCALITY. "... Shady woods, top of a high hill near Norsewood, County of
Waipawa; December 1883: W.C."

Specimen. *Norsewood, Hawkes Bay, W. Colenso, no date, AK 3582 (†Moore and
Edgar 1970: 110). (K and WELT).

Corybas macranthus Hook. f. var. **longipetalus** Hatch *Trans. Proc. R. Soc. N.Z.* 76:
580 (1947)

TYPE LOCALITY. "Waitangi Stream (Waiouru), 3,000ft [914 m] September 2, 1944, E. D.
Hatch"

Specimen. Waitangi Stream, Waiouru, 3,000ft [914 m], E.D.H., 2.9 1944, ex Herb.
Hatch 563, AK 24788 (†Moore and Edgar 1970: 119).

Corybas saprophyticus Hatch *Trans. Proc. R. Soc. N.Z.* 79: 366 (1952)

TYPE LOCALITY. "Wellsford, 29.7.1950, E. D. Hatch."

Specimen. Leptospermum scrub between Warkworth & Wellsford, E.D.H. 569, 29.7.1950, AK 26468A (†Moore and Edgar 1970: 118).

Note. *C. saprophyticus* is a rejected name — see Hatch 1956: 577.

Corysanthes cheesemanii Hook. f. ex Kirk *Trans Proc. N.Z. Inst.* 3: 180 (1871)

TYPE LOCALITY. "Te Whau, 1865, T. K. Ourakei, Mr T. F. Cheeseman, 1867. Titirangi, T. K."

Specimens. Orakei, near Auckland, T.F.C., June 1869, AK 3628; *Ourakei, T.F.C. (in Kirk's hand), no date, AK11242 ex T. Kirk collection.

Corysanthes matthewsii Cheesem. *Trans. Proc. N.Z. Inst.* 31: 351 (1889)

TYPE LOCALITY. "Vicinity of Kaitaia, Mongonui County: Mr R. H. Matthews."

Specimen. *Vicinity of Kaitaia, R. H. Matthews, 1897, AK 3631.

Cyrtostylis macrophylla Hook. f. *Fl. N.Z.* 1: 246 (1853)

TYPE LOCALITY. "Northern Island. East Coast, Colenso."

Specimen. *East Coast, W. Colenso, no date, AK 3559. (K and WELT).

Dendrobium lessonii Col. *Trans. Proc. N.Z. Inst.* 15: 326 (1883)

TYPE LOCALITY. "In forests, Norsewood, Hawkes Bay district,; 1879-1882; also among rocks near the sea at Cape Turakirae (the south head of Palliser Bay), 1845-6: W.C."

Specimen. *Norsewood, Hawkes Bay, W. Colenso, no date, AK 3284. (K and WELT).

Earina aestivalis Cheesem. *Trans. Proc. N.Z. Inst.* 51: 93 (1919)

Type locality. "Near Ahipara, R. H. Mathews! and at Kaiaka, H. Carse! both localities in Mongonui County. In forest at Muriwai, and near the mouth of the Waitakere River; T.F.C. Forest by the Waikanae River, Wellington; B. H. Morison!"

Specimens. Muriwai, T.F.C., Jan. 17, 19, 15, AK 3310 (†Moore and Edgar 1970: 161). Also AK 3305 (X3) and AK 3306; Jan 16, AK 3304 and AK 3309.

Earina alba Col. *Trans. Proc. N.Z. Inst.* 267 (1886)

TYPE LOCALITY. ".....: banks of River Mangatawhainui, Seventy-mile Bush, County of Waipawa; 1878-85: W.C."

Specimen. *Waipawa, Hawkes Bay, W. Colenso, no date, AK 3316. (K and WELT).

Earina quadrilobata Col. *Trans. Proc. N.Z. Inst.* 15: 325 (1883)

TYPE LOCALITY. "..... base of the Ruahine mountain range, east side1845.....; alsonear Norsewood, district of Hawkes Bay, 1878-1881; flowering in November: W. C. Heights of Mount Kaweka, near Napier, 1882: Mr A. Hamilton."

Specimen. *Norsewood, Hawkes Bay, W. Colenso, no date, AK 3300. (K and WELT).

Gastrodia leucopetala Col. *Trans. Proc. N.Z. Inst.* 18: 268 (1886)

TYPE LOCALITY. "In dark forests on the eastern slopes of the Ruahine mountain range. 1850-52; and in similar spots in the Seventy-mile Bush, between Norsewood and Dannevirke, County of Waipawa, 1884-85: W.C."

Specimen. *Dannevirke, Hawkes Bay, W. Colenso, no date, AK 3682 (†Moore and Edgar 1970: 159). (K and WELT).

Gastrodia minor Petrie *Trans. Proc. N.Z. Inst.* 25: 273 (1893)

TYPE LOCALITY. "Town Belt, Dunedin, in shady manuka bush."

Specimen. Town Belt, Dunedin, D.P., Decr. 1892. AK 3688 (Ex Herb. D. Petrie: Dunedin). (†Moore and Edgar 1970: 159). (WELT).

Microtis longifolia Col. *Trans. Proc. N.Z. Inst.* 17: 247 (1885)

TYPE LOCALITY. "Skirts of woods near Norsewood, County of Waipawa: 1883-84: W.C."

Specimen. *Norsewood, Hawkes Bay, W. Colenso, no date, AK 3452 (†Moore and Edgar 1970: 154). (K and WELT).

Othoceras strictum R. Br. forma **viride** Hatch *Trans. R. Soc. N.Z. Bot.* 2: 188 (1963)

TYPE LOCALITY. "Browns Bay, 15.12.1958, P. Bond."

Specimen. *Browns Bay, Auckland, roadside embankment, no collector, 12.1958, AK 116752 (No. 1 on sheet) (†Hatch 1963: 188).

Petalochilus calyciformis Rogers *J. Bot. Lond.* 62: 66 (1924)

TYPE LOCALITY. "Kaitaia, County Mangonui, H. B. Matthews, 27 October-15 Nov. 1916."

Specimen. *Kaitaia, H. B. Matthews, 11.1916, AK 24554 (ex Rogers' Herbarium University of Adelaide ex Eardley) (†Moore and Edgar 1970: 110).

Pterostylis furcata Ldl. var. **linearis** Hatch *Trans. Proc. R. Soc. N.Z.* 77: 243 (1949)

TYPE LOCALITY. ". . . Murimotu, 12, 1944, E. D. Hatch."

Specimen. Murimotu, E. D. H. no. 565, 12.1944, AK 24686 (†Moore and Edgar 1970: 146).

Pterostylis humilis Rogers *Trans. Roy. Soc. S. Aust.* 46: 151 (1922)

TYPE LOCALITY. "The Haunted Whare, near Waimarino (H. B. Matthews)."

Specimen. *"Haunted Whare", Mt Ruapehu, H. B. Matthews, 1.1921, AK 108491 (B & C on sheet) (†Hatch 1945: 246).

Pterostylis irsoniana Hatch *Trans. Proc. R. Soc. N.Z.* 78: 104 (1950)

TYPE LOCALITY. ". . . North Egmont Hostel, 3,800ft [1158 m], 12.1948, O. E. Gibson."

Specimen. *North Egmont Hostel, 3,800ft [1158 m], O. E. Gibson, 12.1948, AK 24604 ex Herb. Hatch no. 568 (†Moore and Edgar 1970: 147).

Pterostylis matthewsii Cheeseman *Trans. Proc. N.Z. Inst.* 47: 46 (1915)

TYPE LOCALITY. "Mangonui County, crest of ridge leading to Pukemiro Hill, near Kaitaia, H. B. Matthews!"

Specimen. *Kaitaia, Mangonui County, H. B. Matthews, August 1914, AK 3518.

Pterostylis montana Hatch *Trans. Proc. R. Soc. N.Z.* 77: 239 (1949)

TYPE LOCALITY. ". . . Halfmoon Bay, Stewart Island, 11.1946, C. Smith."

Specimen. *Halfmoon Bay, Stewart Island, Cedric Smith, 11.1946, AK 24628 ex Herb. Hatch no. 564 (†Moore and Edgar 1970: 146).

Pterostylis speciosa Col *Trans. Proc. N.Z. Inst.* 22: 488 (1890)

TYPE LOCALITY. "Near Mount Tongariro, County of East Taupo: 1889: Mr H. Hill."

Specimen. *Near Mount Tongariro, H. Hill, no date, AK 3491 (†Moore and Edgar 1970: 144). (K and WELT).

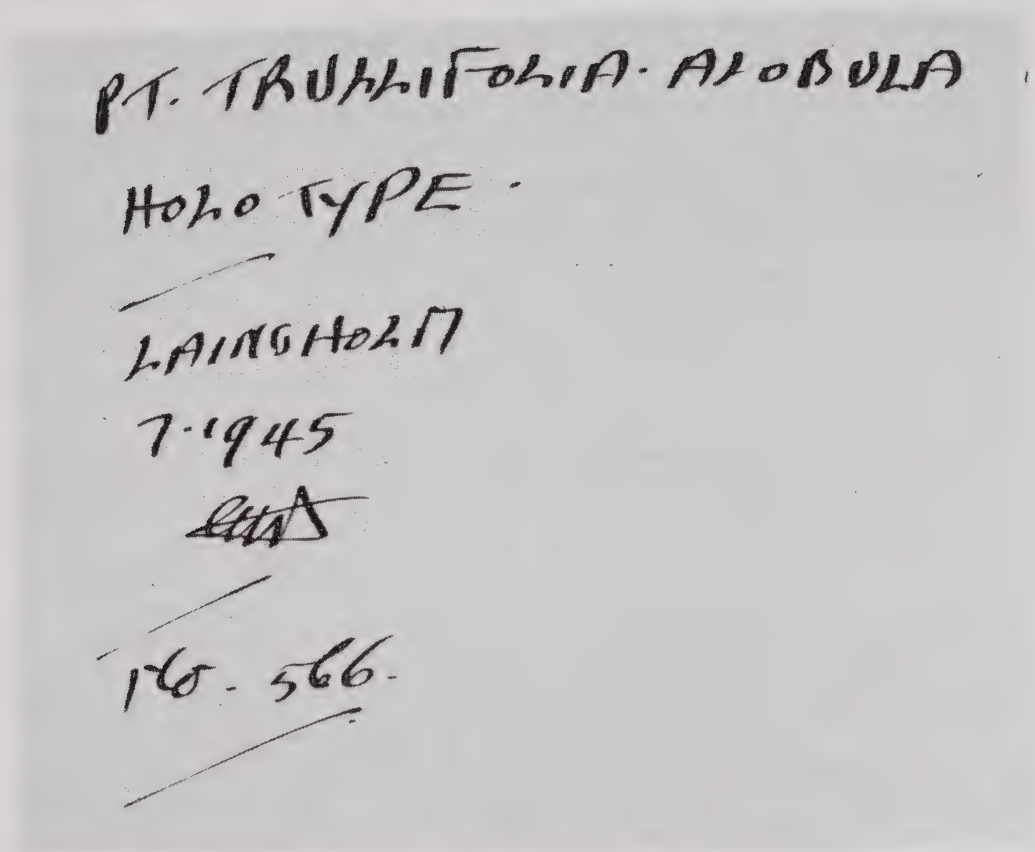


Fig. 4. Hand-printing by Edwin D. Hatch on herbarium sheet now in AK.

Pterostylis trullifolia Hook. f. var. **alobula** Hatch *Trans. Proc. R. Soc. N.Z.* 77: 244 (1949)

TYPE LOCALITY. "Laingholm, 7, 1945, E.D. Hatch, No. 566."

Specimen. Laingholm, E.D.H., No. 566, 7, 1945, AK 24608 (Fig. 4) (†Moore and Edgar 1970: 139).

Pterostylis trullifolia Hook. f. var. **gracilis** Cheesem. *Trans. Proc. N.Z. Inst.* 47: 46 (1915).

TYPE LOCALITY. "Vicinity of Auckland, Waitakerei and Hunua Ranges, T.F.C.; Thames, J. Adams! Kaitaia, R. H. Matthews!"

Specimen. Titirangi, near Auckland, T.F.C., Sept. 1883, AK 3531.

Sarcochilus adversus Hook. f. *Fl. N.Z.* 1: 241 (1853)

TYPE LOCALITY. "Opuragi, Banks and Solander. Bay of Islands and Wairarapa, Edgerley, Colenso."

Specimen. *No locality, Banks & Solander, Cook's first Voyage, 1768-71, AK 108367 (Ex Herbario Musei Britannici). (BM).

Thelymitra decora Cheesem. *Man. N.Z. Fl.* 1151 (1906)

TYPE LOCALITY. "Summit of Mount Kakaramea, Taupo, and hills near the base of Ngauruhoe, alt. 3,000-5,000ft [914-1524 m], T.F.C."

Specimen. Summit of Mount Kakaramea, Taupo, 4,000ft [1219 m]. T.F.C., Jan. 1905, AK 3361 (3 sheets) (†Moore and Edgar 1970: 128).

Thelymitra pachyphylla Cheesem. *Man. N.Z. Fl.* 1151 (1906)

TYPE LOCALITY. "Nelson — Vicinity of Westport, Townson! Westland — Kumara, Brame!"

Specimens. *Vicinity of Westport, W. Townson, no date, AK 3376 (2 sheets) (†Moore and Edgar 1970: 128).

Townsonia deflexa Cheesem. *Man. N.Z. Fl.* 692 (1906)

TYPE LOCALITY. "Nelson — Vicinity of Westport, Townson."

Specimens. *Near Westport, W. Townson No. 480, no date, AK 3624, *Mount Frederic, near Westport, W. Townson, no date, AK 3625; *Mt Rochfort, near Westport, W. Townson, no date, AK 3626 (†Moore and Edgar 1970: 107).

Yonia australis Hatch *Trans. R. Soc. N.Z. Bot.* 2: 185 (1963)

TYPE LOCALITY. "Glorit 24.12.1962. R. Beever."

Specimen. *Glorit (Kaipara) under mature Taraire, R. & J. Beever, 24.12.1962, AK 108769 (No. 1 on sheet) (†Hatch 1963: 185).

POTAMOGETONACEAE

Potamogeton cheesemanii A. Benn. *J. Bot. Lond.* 21: 66 (1883)

TYPE LOCALITY. "New Zealand, St John's Lake, North Island, December, 1881; Mr T. F. Cheeseman . . ."

Specimen. St John's Lake, T.F.C., Dec. 1881, AK 1237 (†Moore and Edgar 1970: 12).

Potamogeton suboblongus Hagstrom *K. svenska Vet. Akad. Handl.* 55: 182 (1916)

TYPE LOCALITY. "Taupaki, Kaipara, N. Island, N. Zealand."

Specimen. Taupaki, Kaipara, T.F.C., April 1884, AK 108158, (†Moore and Edgar 1970: 13).

ZANNICHELLIACEAE

Lepilaena bilocularis Kirk *Trans. Proc. N.Z. Inst.* 28: 500 (1896)

TYPE LOCALITY. "South Island — Canterbury — drains and streams running into the Selwyn. In a small stream near the outlet of Lake Ellesmere: T. Kirk. Otago — Waiholo Lake: D. Petrie!"

Specimens. Water courses near Lake Ellesmere, ex Herb. T. Kirk, no date, AK 1256 (†Moore and Edgar 1970: 18). (WELT). Lake Waiholo, D. P., Feby 2nd 1891, AK 1255. †Moore and Edgar 1970: 18. (WELT).

Acknowledgement. I am indebted to Mr A. E. Wright for his help in preparing the list of Carices.

REFERENCES

COOK, V. J.

1947 Description of new species of *Scirpus*. *Trans. Proc. R. Soc. N.Z.* 76: 567-571.

1953 Additions to and notes on N.Z. *Scirpus* and *Carex*. *Trans. R. Soc. N.Z.* 81: 157-164.

EDGAR, E.

1964 The leafless species of *Juncus* in New Zealand. *N.Z.J. Bot.* 2: 182-204.

- 1966 *Luzula* in New Zealand *NZ.J. Bot.* 4: 159-184.
- HAMLIN, B. G.
 1954 Studies in New Zealand Carices 1. The section *Acutae* Fries. *Trans. R. Soc. NZ.* 82: 49-64.
 1959 A revision of the genus *Uncinia* (Cyperaceae-Caricoideae) in New Zealand. *Bull. Dominion Mus. Wellington* 19: 1-106.
 1962 Studies in New Zealand Carices 6. Subgenus *Primocarex* Kukenthal. *Trans. R. Soc. NZ. Bot.* 1: 269-277.
 1968 The genus *Carex* sect. *Echinochlaenae* Th. Holm in New Zealand: typification, classification and description of new species. *Rec. Dominion Mus. Wellington* 6: 97-111.
- HATCH, E. D.
 1945 Notes on New Zealand orchids. *Trans. Proc. R. Soc. NZ.* 75: 367-370.
 1956 Name changes in the orchid genus *Corybas* Salisbury. *Trans. R. Soc. NZ.* 83: 577.
 1963 Notes on New Zealand orchids 2. *Trans. R. Soc. NZ. Bot.* 2: 185-188.
- MOORE, L. B. and E. EDGAR
 1970 *Flora of New Zealand* Vol. 2. Government Printer, Wellington. 354p.
- MUELLER, F.
 1955 Descriptive characters of new alpine plants, from continental Australia. *Trans. Phil. Soc. Vict.* 1:110.
- NELMES, E.
 1955 Notes on Cyperaceae. *Kew Bull.* 10: 84.
- WRIGHT, A. E.
 1978 Annotated checklist of type specimens of New Zealand plants in the Auckland Institute and Museum Herbarium. Part 3. Monocotyledones — Gramineae. *Rec. Auckland Inst. Mus.* 15: 45-53.